

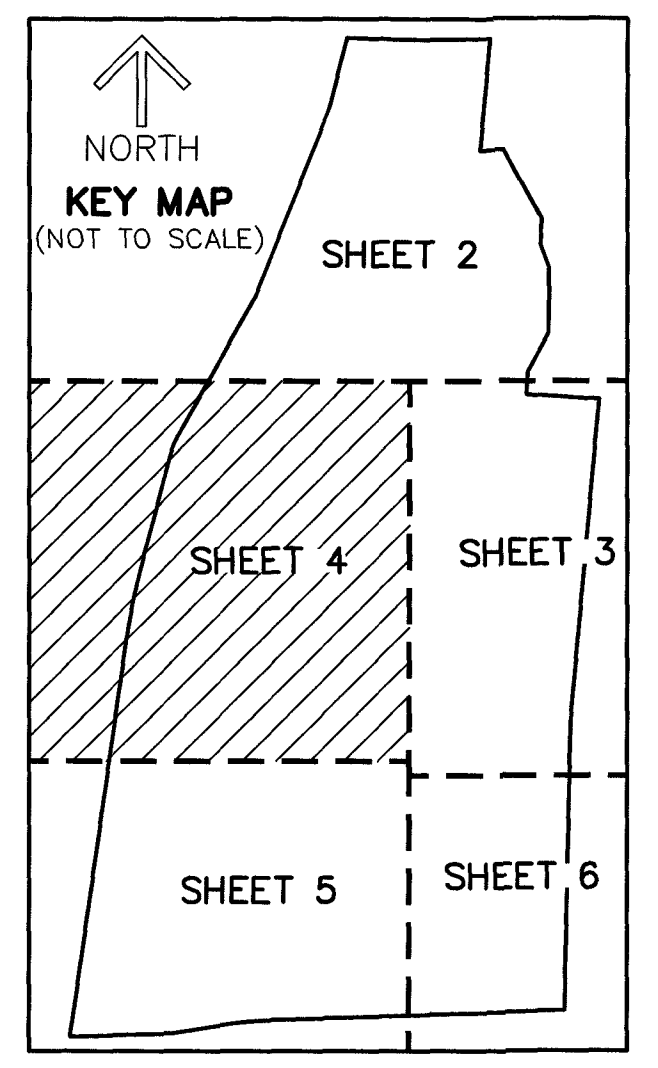
48

THIS INSTRUMENT WAS PREPARED BY
 DAVID P. LINDLEY, PLS
 OF
CAULFIELD & WHEELER, INC.
 ENGINEERS - PLANNERS - SURVEYORS
 7900 GLADES ROAD, SUITE 100
 BOCA RATON, FLORIDA 33434 - (561)392-1991
 JANUARY - 2026

HIGH RIDGE COUNTRY CLUB PLAT 2

BEING A REPLAT OF HIGH RIDGE COUNTRY CLUB, AS RECORDED IN PLAT BOOK 39, PAGES 137 AND 138 OF THE PUBLIC RECORDS OF PALM BEACH COUNTY, FLORIDA, TOGETHER WITH A PORTION OF SECTION 8, TOWNSHIP 45 SOUTH, RANGE 43 EAST, PALM BEACH COUNTY, FLORIDA, LYING IN SECTION 8, TOWNSHIP 45 SOUTH, RANGE 43 EAST, CITY OF BOYNTON BEACH, PALM BEACH COUNTY, FLORIDA.

MATCHLINE SEE SHEET 2



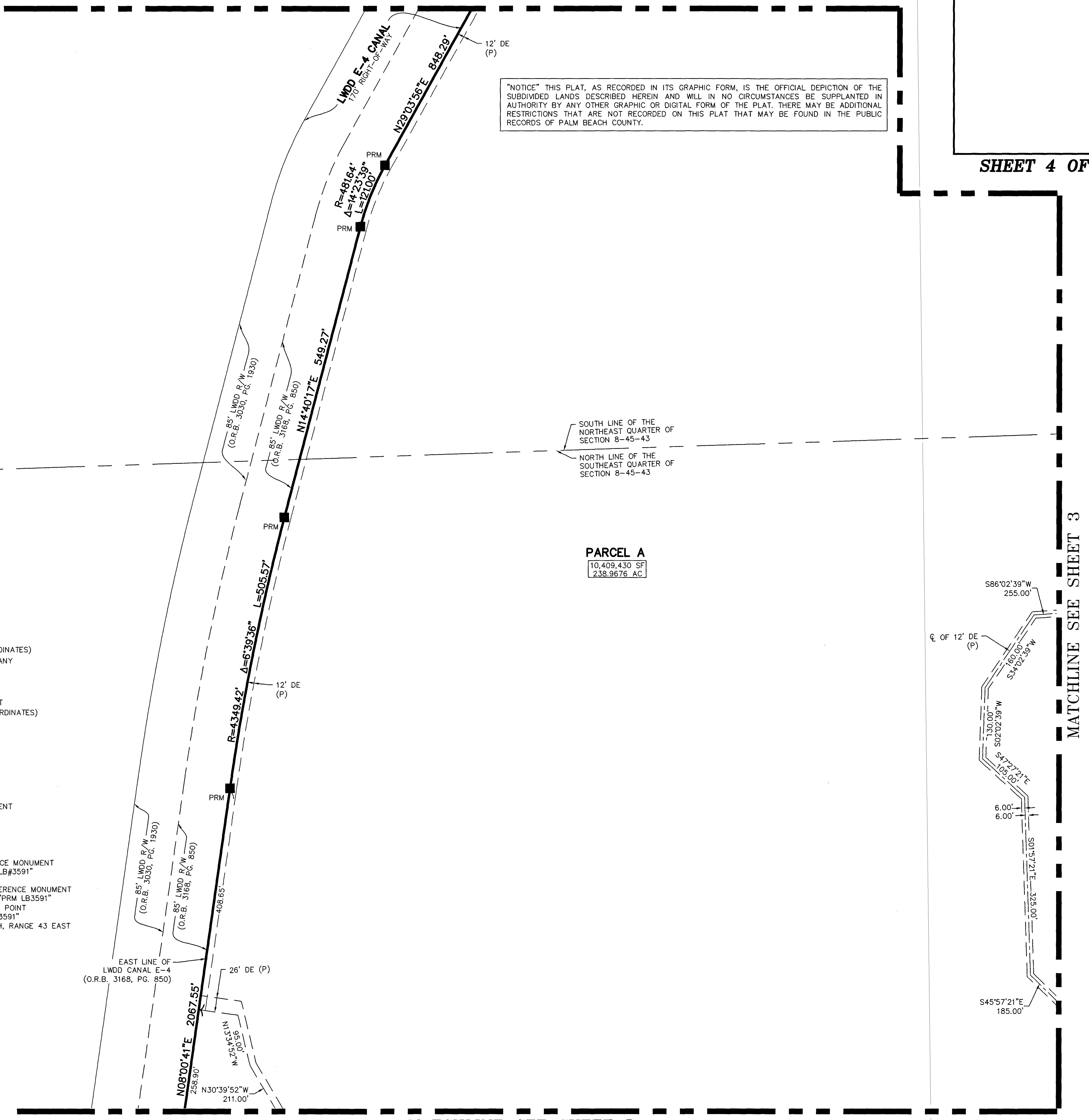
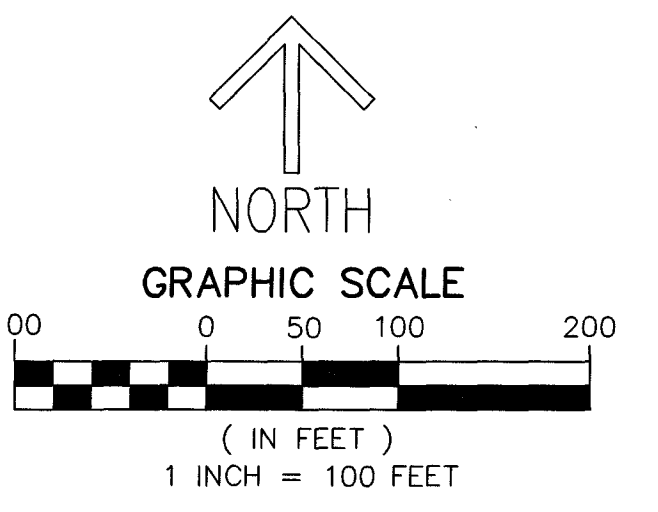
"NOTICE" THIS PLAT, AS RECORDED IN ITS GRAPHIC FORM, IS THE OFFICIAL DEPICTION OF THE SUBDIVIDED LANDS DESCRIBED HEREIN AND WILL IN NO CIRCUMSTANCES BE SUPPLANTED IN AUTHORITY BY ANY OTHER GRAPHIC OR DIGITAL FORM OF THE PLAT. THERE MAY BE ADDITIONAL RESTRICTIONS THAT ARE NOT RECORDED ON THIS PLAT THAT MAY BE FOUND IN THE PUBLIC RECORDS OF PALM BEACH COUNTY.

SHEET 4 OF 7

NOTES
COORDINATES, BEARINGS AND DISTANCES
 COORDINATES SHOWN ARE GRID
 DATUM = NAD 83 (1990 ADJUSTMENT)
 ZONE = FLORIDA EAST
 LINEAR UNIT = U.S. SURVEY FEET
 COORDINATE SYSTEM 1983 STATE PLANE
 TRANSVERSE MERCATOR PROJECTION
 ALL DISTANCES ARE GROUND UNLESS OTHERWISE NOTED
 SCALE FACTOR = 1.000044382
 GROUND DISTANCE X SCALE FACTOR = GRID DISTANCE
 BEARINGS AS SHOWN HEREON ARE GRID DATUM,
 NAD 83 (1990 ADJUSTMENT), FLORIDA EAST ZONE.

- LEGEND/ABBREVIATIONS**
- AC - ACRES
 - CL - CENTERLINE
 - CB - CHORD BEARING
 - CD - CHORD DISTANCE
 - Δ - DELTA (CENTRAL ANGLE)
 - DE - DRAINAGE EASEMENT
 - E - EASTING (WHEN USED BY COORDINATES)
 - FPL - FLORIDA POWER & LIGHT COMPANY
 - IEE - INGRESS EGRESS EASEMENT
 - L - ARC LENGTH
 - LB - LICENSED BUSINESS
 - LWDD - LAKE WORTH DRAINAGE DISTRICT
 - N - NORTHING (WHEN USED BY COORDINATES)
 - NAD - NORTH AMERICAN DATUM
 - O.R.B. - OFFICIAL RECORD BOOK
 - (P) - PLAT BOOK 39, PAGE 137
 - PBC - PALM BEACH COUNTY
 - P.B. - PLAT BOOK
 - PG(S) - PAGE(S)
 - P.O.B. - POINT OF BEGINNING
 - P.O.C. - POINT OF COMMENCEMENT
 - PRM - PERMANENT REFERENCE MONUMENT
 - R - RADIUS
 - R/W - RIGHT-OF-WAY
 - SF - SQUARE FEET
 - UE - UTILITY EASEMENT
 - PRM - INDICATES PERMANENT REFERENCE MONUMENT NAIL AND DISK STAMPED "PRM LB#3591" UNLESS OTHERWISE NOTED.
 - ▲ PRM - INDICATES SET PERMANENT REFERENCE MONUMENT 5/8" IRON ROD/CAP STAMPED "PRM LB3591"
 - ⊙ PCP - INDICATES PERMANENT CONTROL POINT NAIL & DISK STAMPED "PCP LB3591"
 - 8-45-43 - SECTION 8, TOWNSHIP 45 SOUTH, RANGE 43 EAST

PARCEL A
 10,409,430 SF
 238,9676 AC



MATCHLINE SEE SHEET 3

MATCHLINE SEE SHEET 5